

# Protecting Our Coasts and Waterways:

*Maritime Safety, Security, Environmental  
Stewardship, Mobility, & National Defense*

---

Captain Scott J. Ferguson  
Sector Commander  
USCG Sector Puget Sound



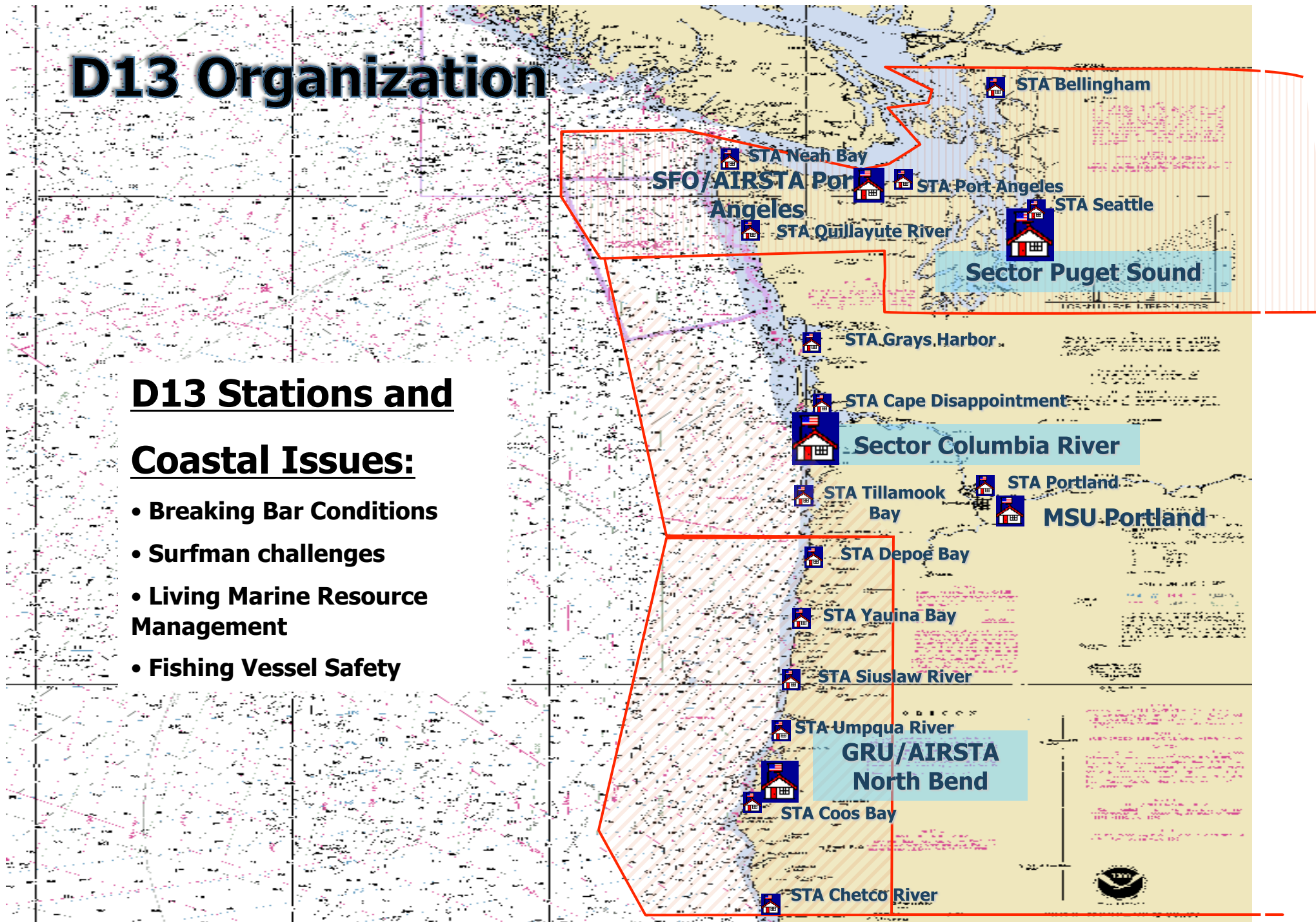
Homeland  
Security



# D13 Organization

## D13 Stations and Coastal Issues:

- Breaking Bar Conditions
- Surfman challenges
- Living Marine Resource Management
- Fishing Vessel Safety



# Thirteenth District Assets

## Sectors(2)

Puget Sound (Seattle)  
Columbia River (Astoria)  
+Air Station Astoria

## Group/Air Station (1)

North Bend  
+ AIRFAC Newport

## SFO/ Air Staion (1)

Port Angeles

## Buoy Tenders (3)

225' Astoria  
175' Everett  
100' Portland

## Personnel

Active Duty: 2,007  
Reserve: 391  
Civilian: 130  
Auxiliary: 1,630

## Patrol Boats (9)

110'  
Port Angeles  
Coos Bay  
87'  
Port Townsend  
Port Angeles (3)  
Bellingham (2)  
Everett

## Vessel Traffic

### Service (1)

Puget Sound

## Aids to Navigation

### Teams (4)

Puget Sound  
Kennewick  
Astoria  
Coos Bay

## Stations (15+2)

### Washington

Bellingham  
Port Angeles  
Neah Bay  
Quillayute River  
Seattle  
Grays Harbor  
Cape Disappointment

### Oregon

Tillamook Bay  
Portland  
Depoe Bay  
Yaquina Bay  
Siuslaw River  
Umpqua River  
Coos Bay  
Chetco River

## Maritime Force Protection Unit (1) - Bangor

87' Patrol Boats (2)

64' Special Purpose Craft-Screening Vessels (SPC-SV) (3)

## Summer Only (Dets)

Coquille River  
Rogue River



Homeland  
Security

# District Operational Assets

## Small Boats



**47-Motor Lifeboat**



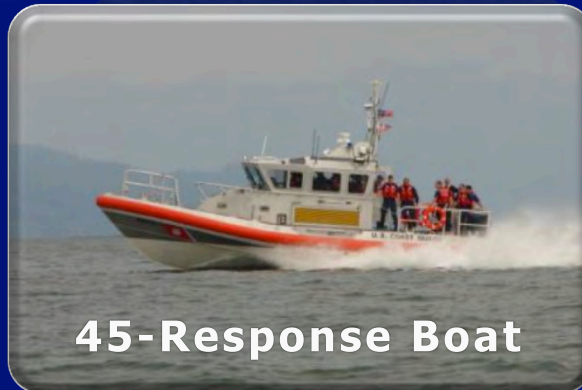
**52-Motor Lifeboat**



**33-SPC (LE)**



**64-SPC (SV)**



**45-Response Boat**



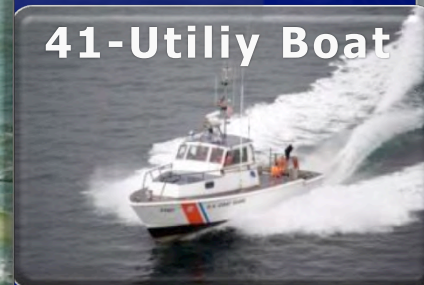
**55-ATON Boat**



**24-SPC (SW)**



**26-TANB**



**41-Utility Boat**



**25-foot Response Boat**

# District Operational Assets

## Cutters and Aircraft



**MH-65 Dolphin**



**87-foot Patrol Boat**



**110-foot Patrol Boat**



**HH-60 Jayhawk**



**225-foot Buoy Tender**

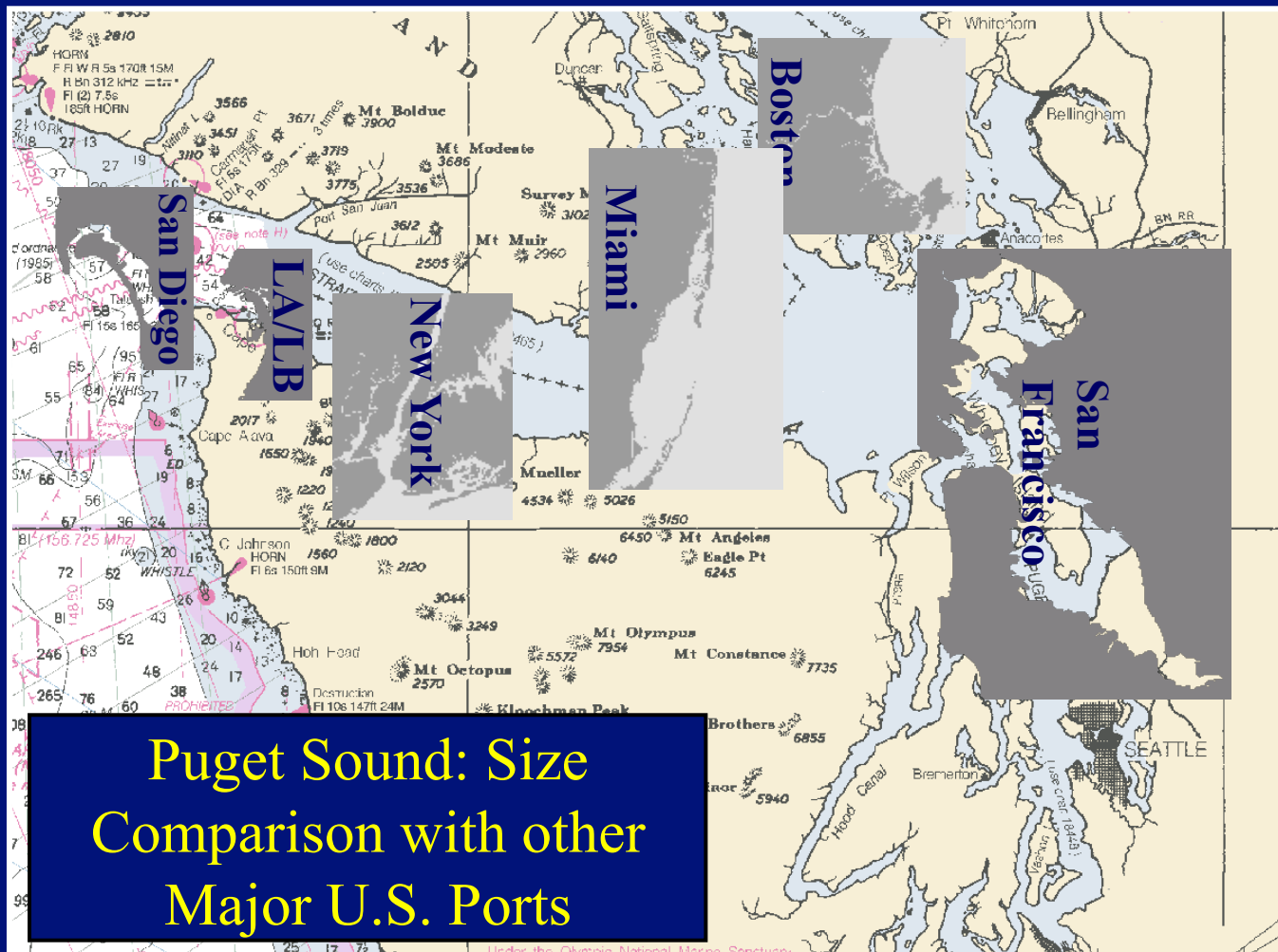


**100-foot Buoy Tender**



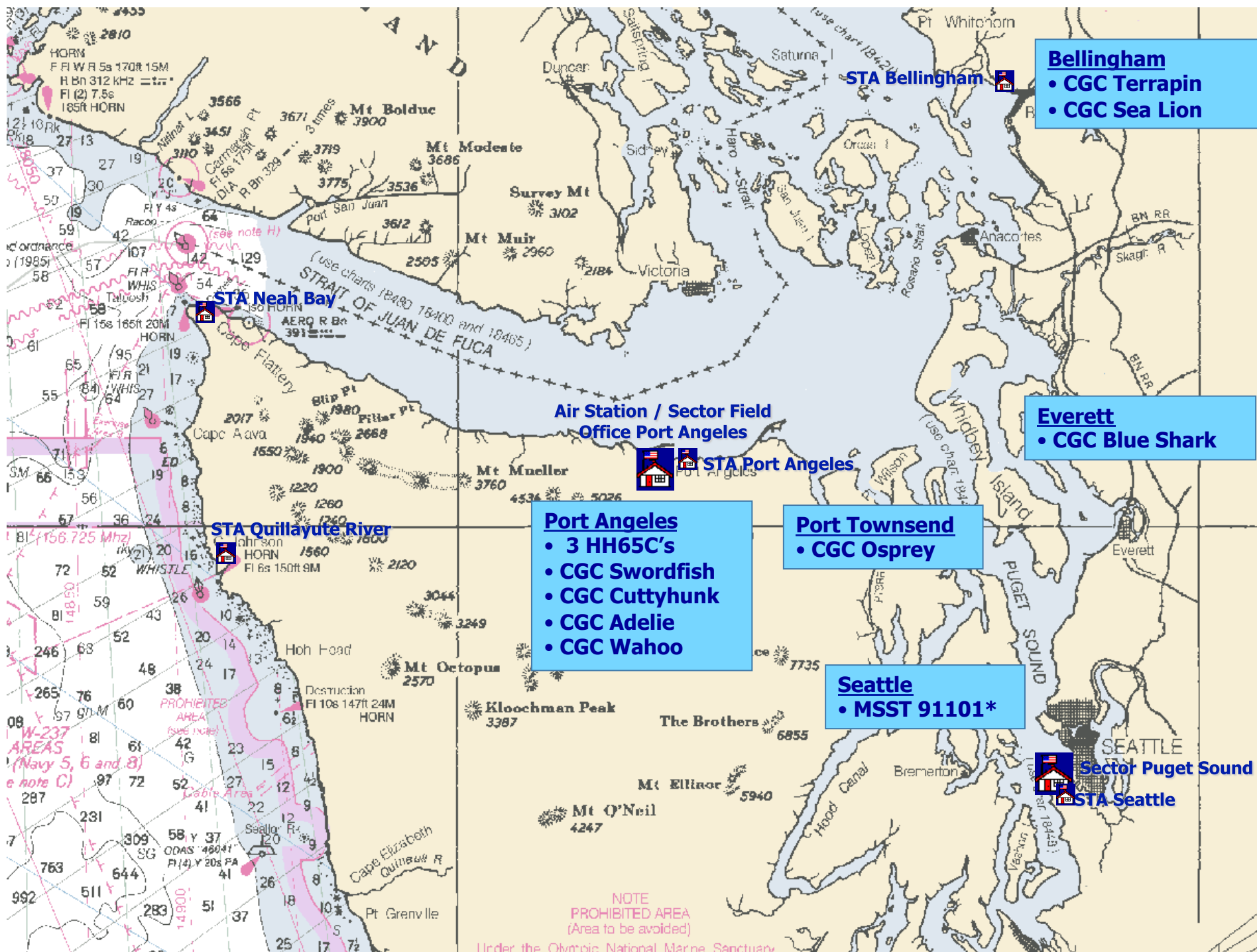
**175-foot Buoy Tender**

# Sector Puget Sound AOR



Homeland  
Security





# Sector Commander Duties

Sector Commander responsibilities include:

- Captain of the Port
- Federal Maritime Security Coordinator
- Federal On-Scene Coordinator
- Officer in Charge of Marine Inspection
- Search and Rescue Mission Coordinator
- Cooperative Vessel Traffic Service Coordinator



Homeland  
Security



# Sector Statistics

- Largest ferry system in US
- Third largest container port
- Military outload port
- Third largest Naval presence
- National Marine Sanctuary
- International border



Homeland  
Security



# Sector Puget Sound Mission Portfolio

Sector Puget Sound brings together the full range of Coast Guard missions and capabilities into one consolidated command. The full range of Coast Guard missions performed include:

- Maritime Safety
- Maritime Security
- Protection of Natural Resources
- Maritime Mobility
- National Defense



Homeland  
Security



# Puget Sound Challenges

**3500 sq. mi. AOR; 123 - 147  
mile transits to ports**

**~2586 Deep Draft Ships Arrivals  
per year**

**Alaskan Fishing Fleet Homeport  
~ 1600 vessels**

**1.3 Million Recreational Boating  
Population**

**4.1M TEU containers thru  
Seattle & Tacoma; 3rd largest in  
nation.**

**Located on International Border  
with Canada**

**15 Billion Gallons of Oil Moved  
Annually**

**USN Strategic Port - 3rd Largest  
Domestic Port**

- 7 Waterfront Facilities
- 20+ USN Vsl Movements/mo
- Escorts avg 10+ hrs

**Washington State Ferry System  
~ 23 vessels  
~ 22.4 million riders**

**Cruise Ship Industry:  
~ 850K passengers in 2011,  
~ 205 ships calling in 2012**

**Designated Military Outload Port**

NOTE  
PROHIBITED AREA  
(Area to be avoided)

Under the Olympic National Marine Sanctuary

# Safety & Environmental Compliance

- US Flag Inspections – 650 vessel fleet of responsibility
- Port State Control – 348 Safety Exams / 317 Security Exams
- Towing Vessels – 225 vessel fleet of responsibility
- Fishing Vessels - ~2800 vessel fleet of responsibility
- Waterfront Facilities – 113 facilities / 351 exams
- Marine Casualty Investigations – 175 cases a year
- Waterways Management – 750 marine events, 60+ safety zones
- Recreational Boating on decline...rise in quiet boats



Homeland  
Security

# CG Authorization Bill

- Significant changes to the Marine Safety/Prevention Program
- Mandatory exams for commercial fishing vessels
- Notice of Proposed Rule Making for towing vessel regulations
- High volume port line
- Comparability Analysis between Canada and US in the Strait of Juan de Fuca



Homeland  
Security



# VTS Puget Sound

- VTS Mission: To enhance navigation, vessel safety, and marine environmental protection, and promote safe vessel movement by reducing the potential for collisions, groundings, and loss of life.
- 1 of 12 VTS's in nation - largest VTS Area - 3,500 square miles
- AOR includes the Strait of Juan de Fuca, Puget Sound and the San Juan Islands
- Oversees approximately 212,000 vessel transits annually
- Assists with all missions including SAR, Law Enforcement & pollution cases while working closely with SCC/JHOC
- **Cooperative Vessel Traffic Service (CVTS)**  
(Established via International Agreement in 1979 – each country manages a portion of the other country's waters to provide seamless traffic management along the international boundary)



Homeland  
Security

# Security

## President's National Security Strategy

- Strong economy
- Greater engagement
- Bolster alliances and build new ones
- Promote US values and human rights



Homeland  
Security



# Security - Ports, Waterways and Coastal Security

- U.S. Coast Guard Waterborne Security
  - High Capacity Passenger Vessel Escorts
  - Maritime Critical Infrastructure Patrols
  - Small Vessel Security Boardings
  - High Interest Vessel Security Boardings
- Airborne Use of Force
- Ship Rider Program with Canada



Homeland  
Security



# Security – Intel Integration

## Integrated Border Enforcement Team (IBET)/ Joint Terrorism Task Force (JTTF)

### IBET

- Located at U.S. Border Patrol Blaine Sector with close proximity to the border. Includes:
- Integrated investigative component;
- Integrated intelligence component;
- CORE GROUP: RCMP, CBSA, CBP, USCG, ICE

### JTTF

- Seattle JTTF comprised of federal, state and local law enforcement/intel entities focused on int. and domestic terrorism cases.
- Sector Puget Sound Intel works with and briefs suspicious incidents/cases having a terrorism nexus to:
- JTTF Coast Guard Investigative Service Maritime Liaison Agent



Homeland  
Security



# Security - Key Committees

- Area Maritime Security Committee
- Northwest Area Committee
- Port Readiness Committee
- Harbor Safety Committee



Homeland  
Security



# Security - Maritime Security Risk Assessment Model

- Coast Guard Sponsored/Private developed model used to assess risk to maritime assets measuring:
  - Threat (Identified by Intelligence Community)
  - Vulnerability
  - Consequences (death/injury, economic, environmental, national asset, national icon).
- Used by Sector Puget Sound to assess relative risk of passenger, petroleum, bulk and container, infrastructure and recreational vessels/facilities.
- Provides risk comparison throughout region.
- National level risk comparison, provides:
  - Comparative industry rankings by region and nationally for appropriate distribution of
    - Grants
    - Security Assets



Homeland  
Security



# Security - Port Security Grant Program Process

- Part of overall FEMA grant processes
- Provides funding for regionally significant security projects at maritime facilities, vessels infrastructure
- Assists in mitigating significant security gaps identified by the Port Wide Risk Mitigation and Resiliency Plan
- Addresses current security efforts on local scale such as TWIC



Homeland  
Security



# National Defense - U.S. Navy High Value Unit Escorts

- U.S. Coast Guard security escorts for U.S. Navy units
  - Maritime Force Protection Unit (MFPU) Bangor
  - Sector Puget Sound Cutters and Small Boat Units
- Recent Developments
  - Regulated Navigation Area in Hood Canal, WA
  - 1,000 yard security zone



Homeland  
Security



# National Defense - Military Outloads

- Port of Tacoma – Strategic Port
- Primary port in Pacific Northwest for staging and moving military equipment in support of national strategy
- Coast Guard Sector Puget Sound
  - Provides physical security, establishes security zones to protect critical military equipment
  - Supports U. S. Army Surface Deployment and Distribution Command (SDDC)



Homeland  
Security



Pacific Northwest Regional Coordinating Mechanism (ReCom)  
Geographic Area of Responsibility (AOR)  
Corridor



Homeland  
Security



## Future (10 years out)

- 2000 more ship arrivals to the region
- World will be faster
- Global village
- War on terror will continue; closer to home
- Conventional enemy
- Deepwater will mature; mid-life issues rise
- Sectors will mature; 11 CG missions intact



Homeland  
Security



## Future (cont)

- USCG resource levels will remain flat
- Towing and CFV will be inspected/COI
- Safety, Security, Environmental Stewardship, Mobility, and National Defense roles will be more relevant than ever
- A major natural or man-made disaster will occur in the Pacific Northwest



Homeland  
Security



*We must collaboratively design the maritime community's path to meet the future.*

Questions?



Homeland  
Security

