

Docks & Harbors

Brief

PCC Conference

September 16th, 2015



Docks and Harbors

Develop and provide opportunities, services and facilities to support marine related commerce, industry, fisheries, recreation and visitors.

- Enterprise Fund that operates without local property or sales tax subsidies.
- Docks (cruise ship) and Harbors revenue sources and expenditures are firewalled.



Harbor Facilities

Harris Harbor	204 slips
Aurora Harbor	449 slips
Douglas Harbor	190 slips
Auke Bay Harbor	
• Statters (transient moorage)	~350 slips
• New Float Facility	70 slips
TOTAL	~ 1250



Harbor Boat Launch/Floats

Echo Cove Boat Launch

Amalga Harbor Boat Launch

North Douglas Boat Launch

Douglas Boat Launch

Harris Harbor Boat Launch

Intermediate Vessel Float

Taku Harbor Boat Float

National Guard Float

Wayside Park Float

Norway Point Float



Other Properties

Two Cruise Ship Docks

- Steamship Dock
- Cruise Terminal

Auke Bay Loading Facility

Two Boat Yards (Leased to Juneau Marine Services)

- Auke Bay Boat Yard
- Juneau Fisheries Terminal

Several hundred acres of tidelands and waterfront properties under lease

Douglas RV Park

Juneau Fisheries Terminal

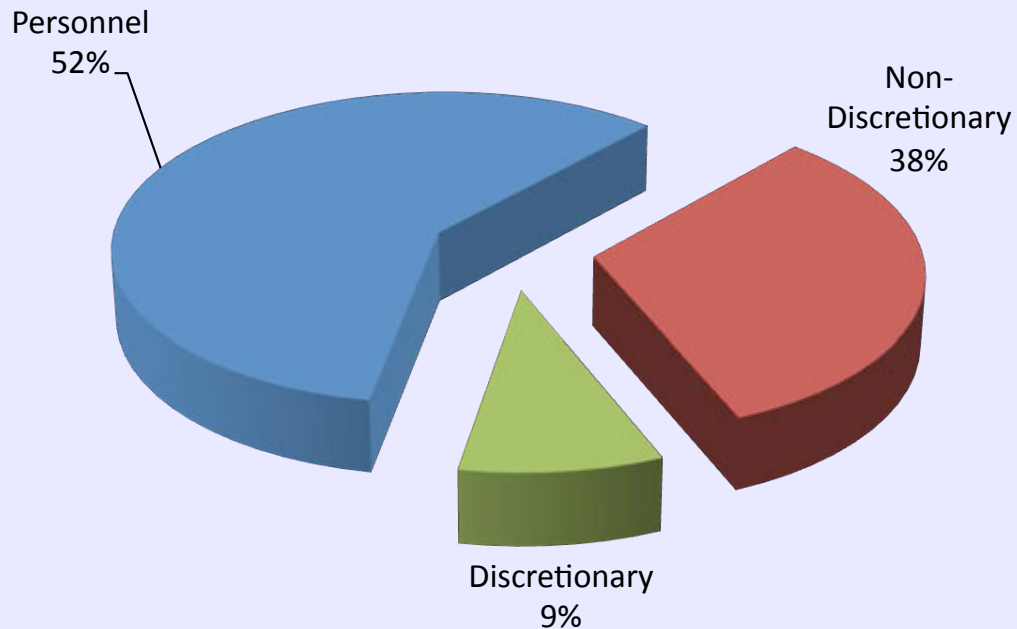
Echo Cove Campground



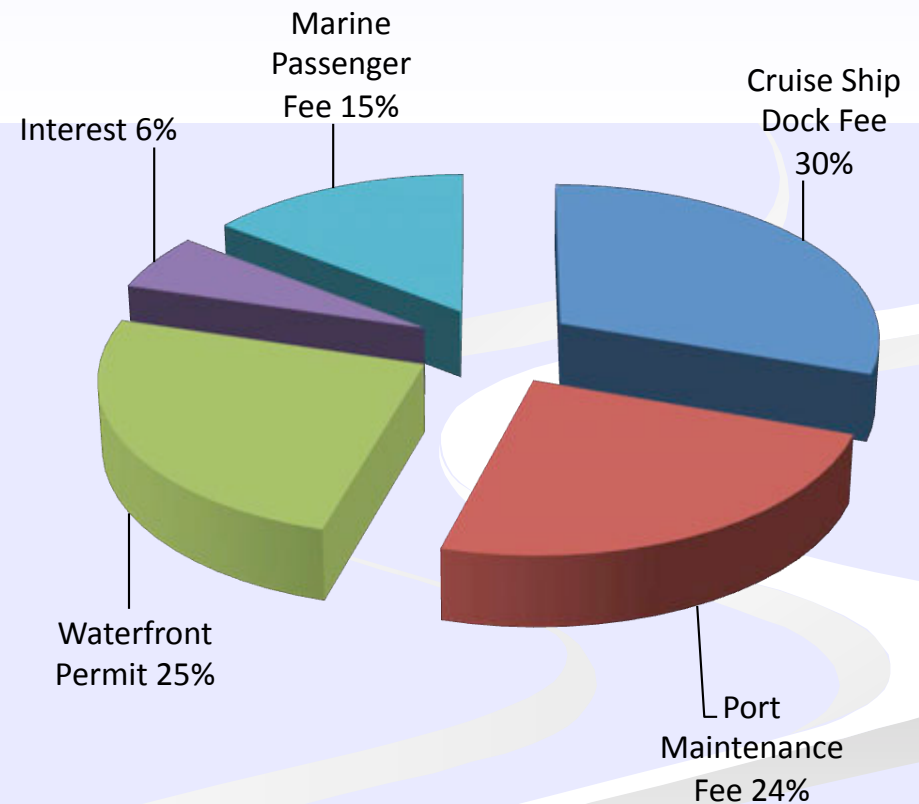
Docks Budget

FY15=\$1.38M

Dock Expenditures



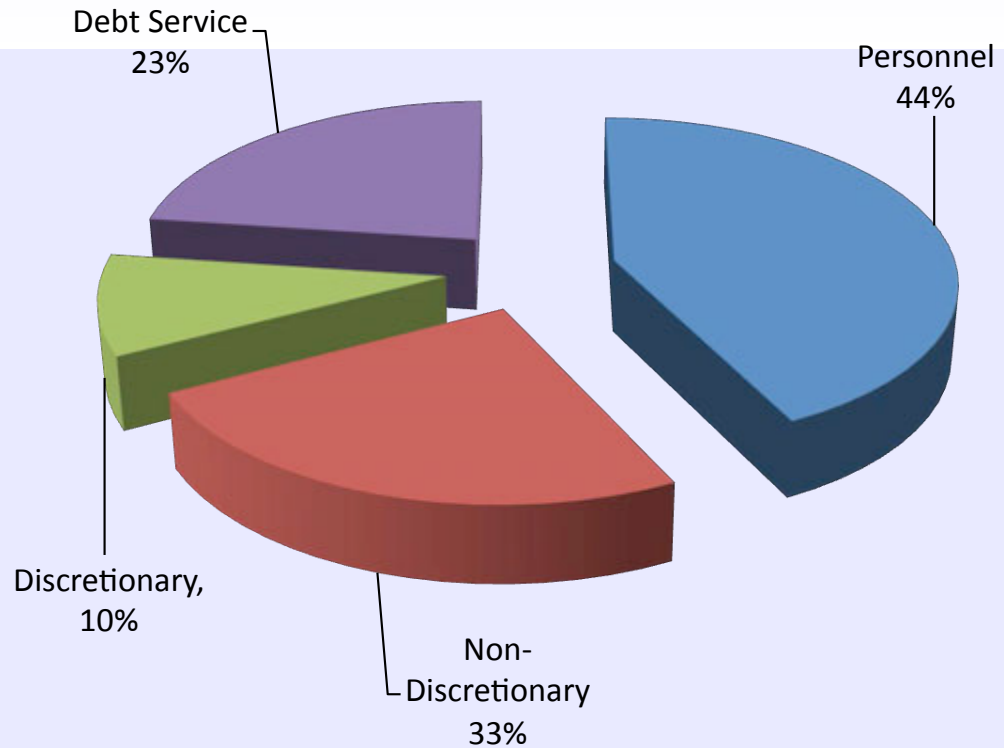
Dock Revenues



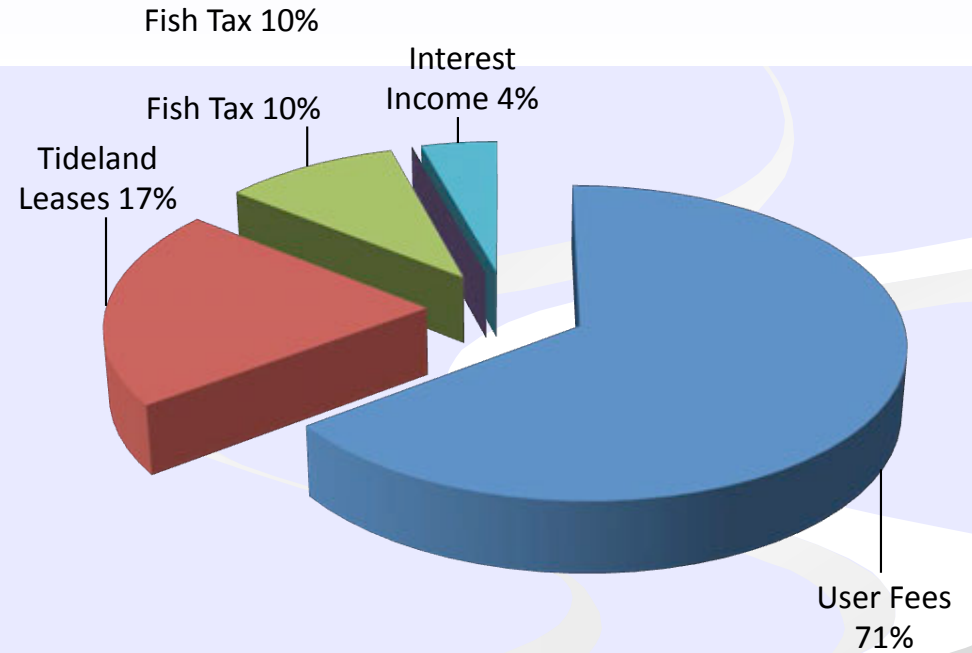
Harbors Budget

FY15=\$3.55M

Harbor Expenditures

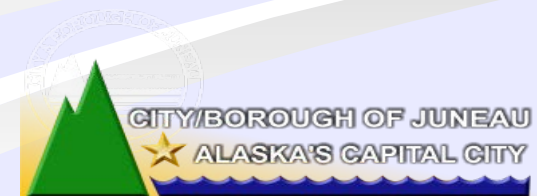


Harbor Revenues



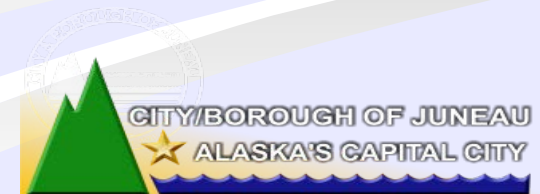
Juneau Cruise Ship Economics

■ Cruise Ship Passengers (2012)	930,000 pax
■ Spend \$180/passenger	\$168M
■ Cruise Ship Crewmember	25,000 crewmbr
■ Spend \$300/crewmember	\$8M
■ Total Sales	\$176M
■ CBJ 5% Tax	\$8.8M
■ Payroll for 2730 Workers	
Employed in tourism	\$95M



Juneau Cruise Ship Revenue

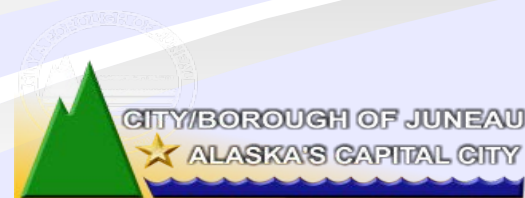
- **CBJ Marine Passenger Fee (\$5/pax) \$4.65M**
 - To offset CBJ services and infrastructure usage by cruise ship passengers
 - Does not apply to vessels < 20 passengers
- **CBJ Port Development Fee (\$3/pax) \$2.80M**
 - For Downtown Cruise Ship Dock Project
 - For projects which benefit Cruise Industry
 - Does not apply to vessels < 20 passengers
- **AK Commercial Passenger Vessel Excise Tax**
 - \$34.50/pax (\$5/pax to CBJ) **\$4.65M**



Commercial Fisheries

Southeast Alaska

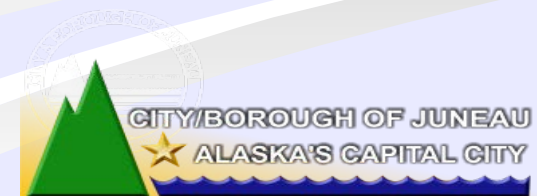
- **Largest Private Sector Employer in SEAK**
 - 10% of all employment
 - 4,645 residents fished commercially
 - 10,000 total involved in SEAK fisheries
- **13% of all regional wages**
 - Ex-vessel value (money paid to fishermen) \$291M
 - Processed \$468M in seafood product shoreside



Commercial Fisheries

City & Borough of Juneau

- **35th Largest U.S. Port by Value (\$23.8M)**
 - Permit Holders - 390
 - Total Skippers plus Crew – 730 (2% of Households)
 - Vessels Homeported - 748
- **Fish Processing (2009 figures)**
 - Wholesale Value \$39M
 - 430 Jobs
 - \$3,958,266 in wages
 - Raw Fish Tax returned \$298,863 to CBJ



Docks & Harbors Capital Projects

Visitor Center – Completed

Cruise Ship Dock Improvements

Statter Harbor Improvements

Douglas Harbor

Aurora Harbor Phase I - Completed

Auke Bay Loading Facility – Completed

Visitor Center



Courtesy of JYL Inc.

Cruise Ship Dock Improvement



Cruise Ship Dock Improvement

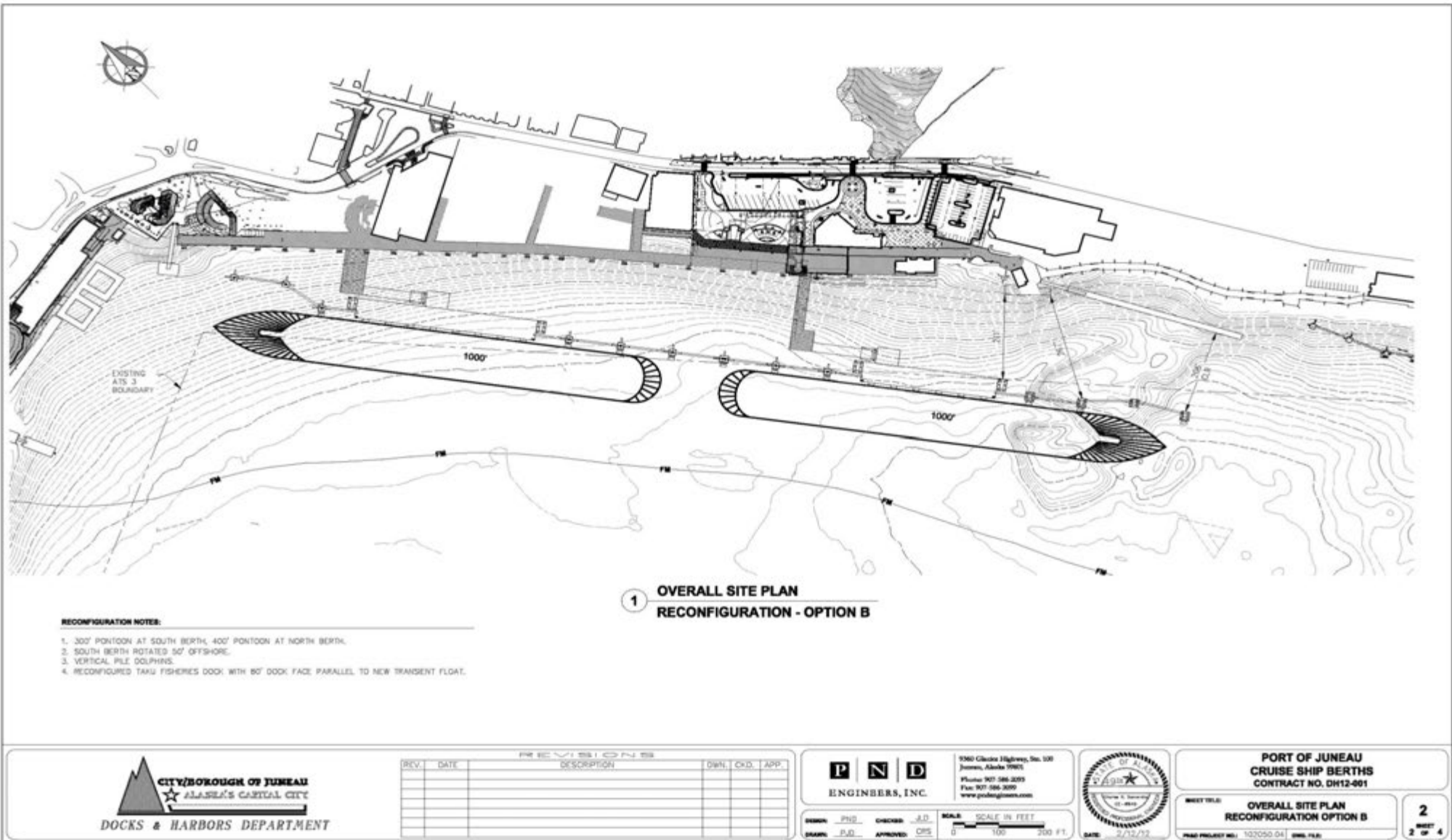


PROPOSED DOCK PROJECT

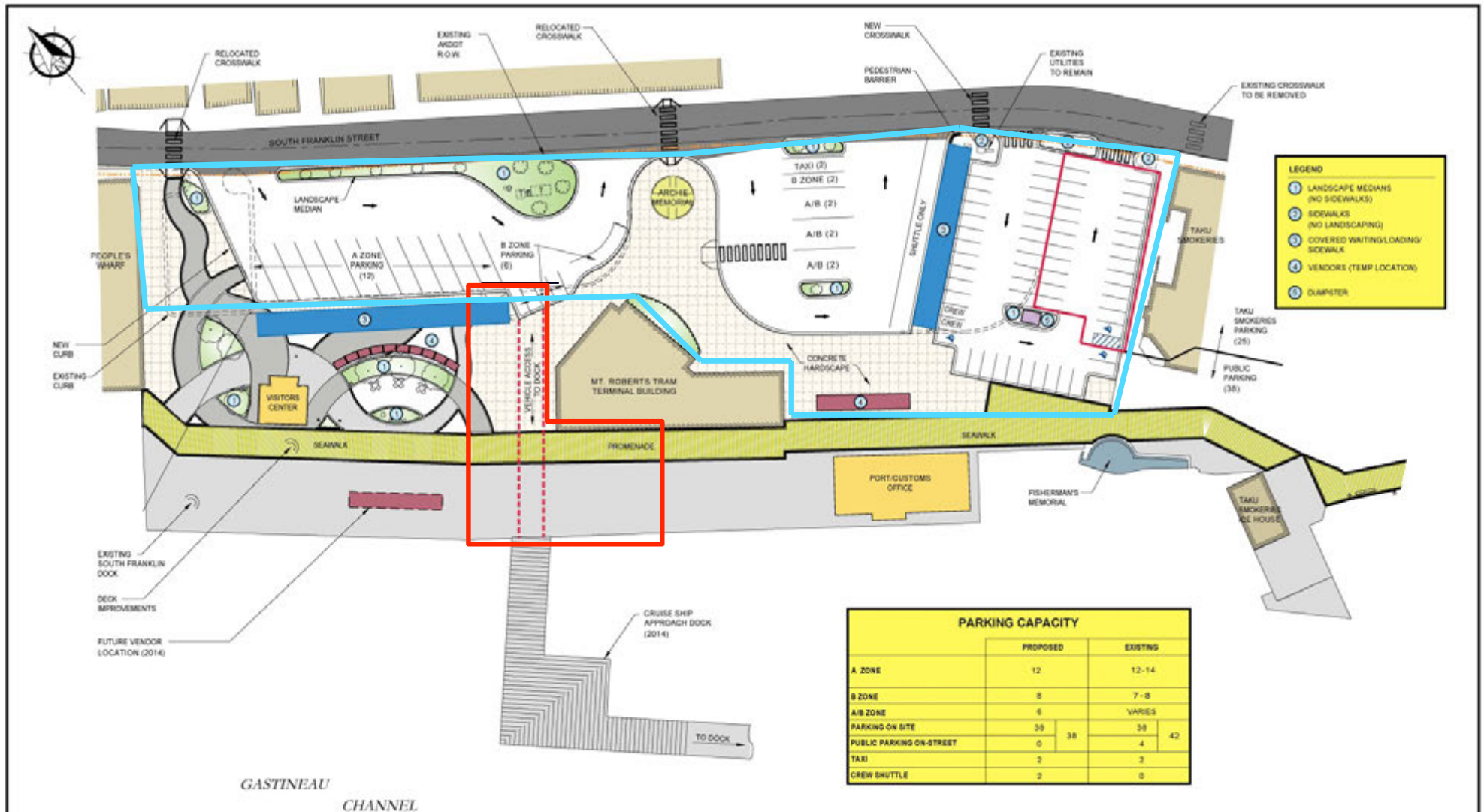


P N D ENGINEERS, INC.		9160 Glacier Highway, Suite 100 Juneau, Alaska 99801 Phone: 907.586.2000 Fax: 907.586.3550 www.pnd-inc.com		CITY & BOROUGH OF JUNEAU, ALASKA DOWNTOWN CRUISE SHIP DOCK RECONFIGURATION
DESIGN: PND	CHECKED: PND	SCALE: SCALE IN FEET	DATE: 12/05/11	SHEET TITLE: SITE PLAN WITH BATHYMETRY
DRAWN: PJD	APPROVED: CRS	0 100 200 FT	PND PROJECT NO.: 102050.02 (DWG. FILE)	1 1 OF 1

Approved Layout



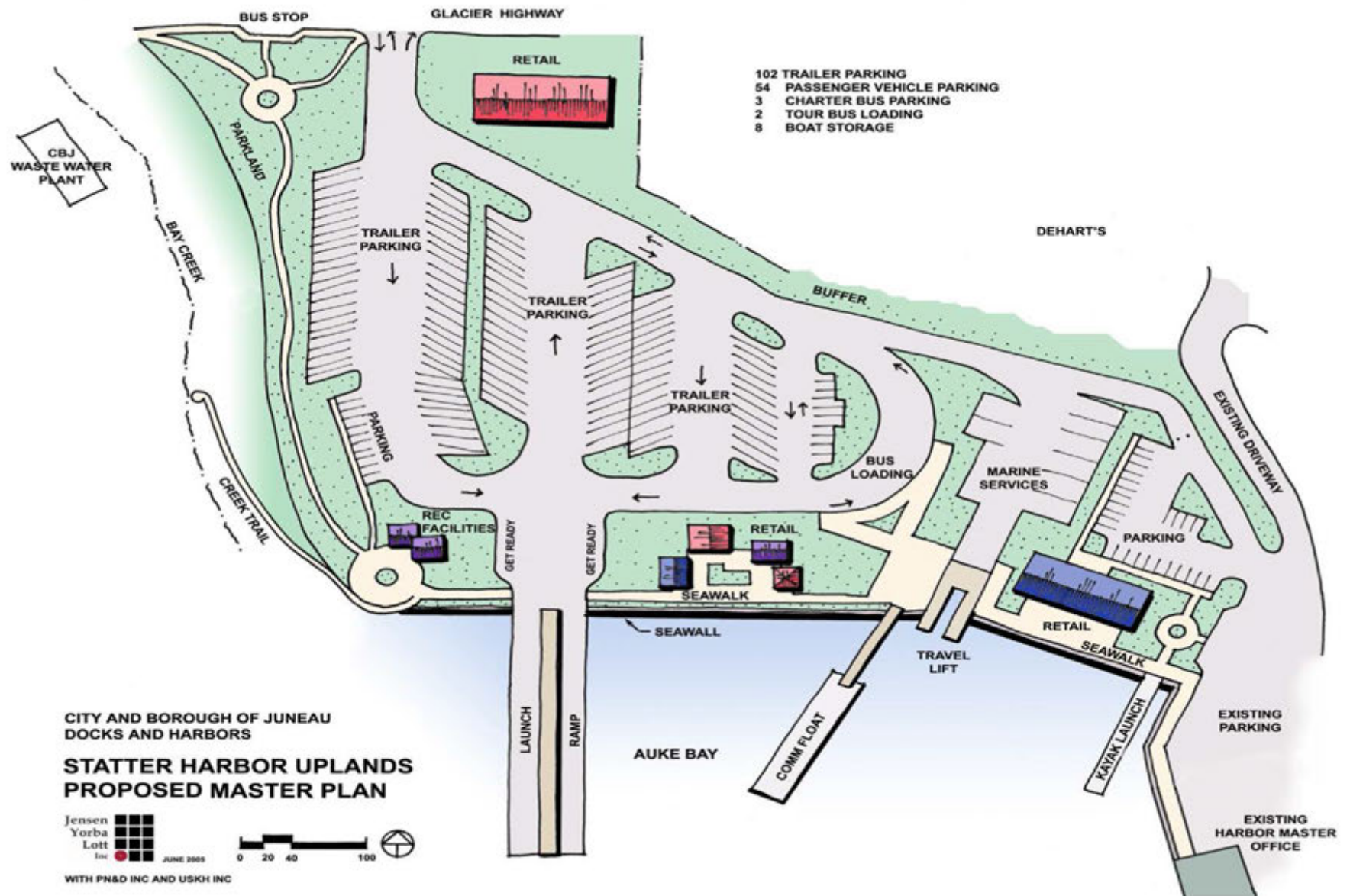
Cruise Ship Terminal Staging Area



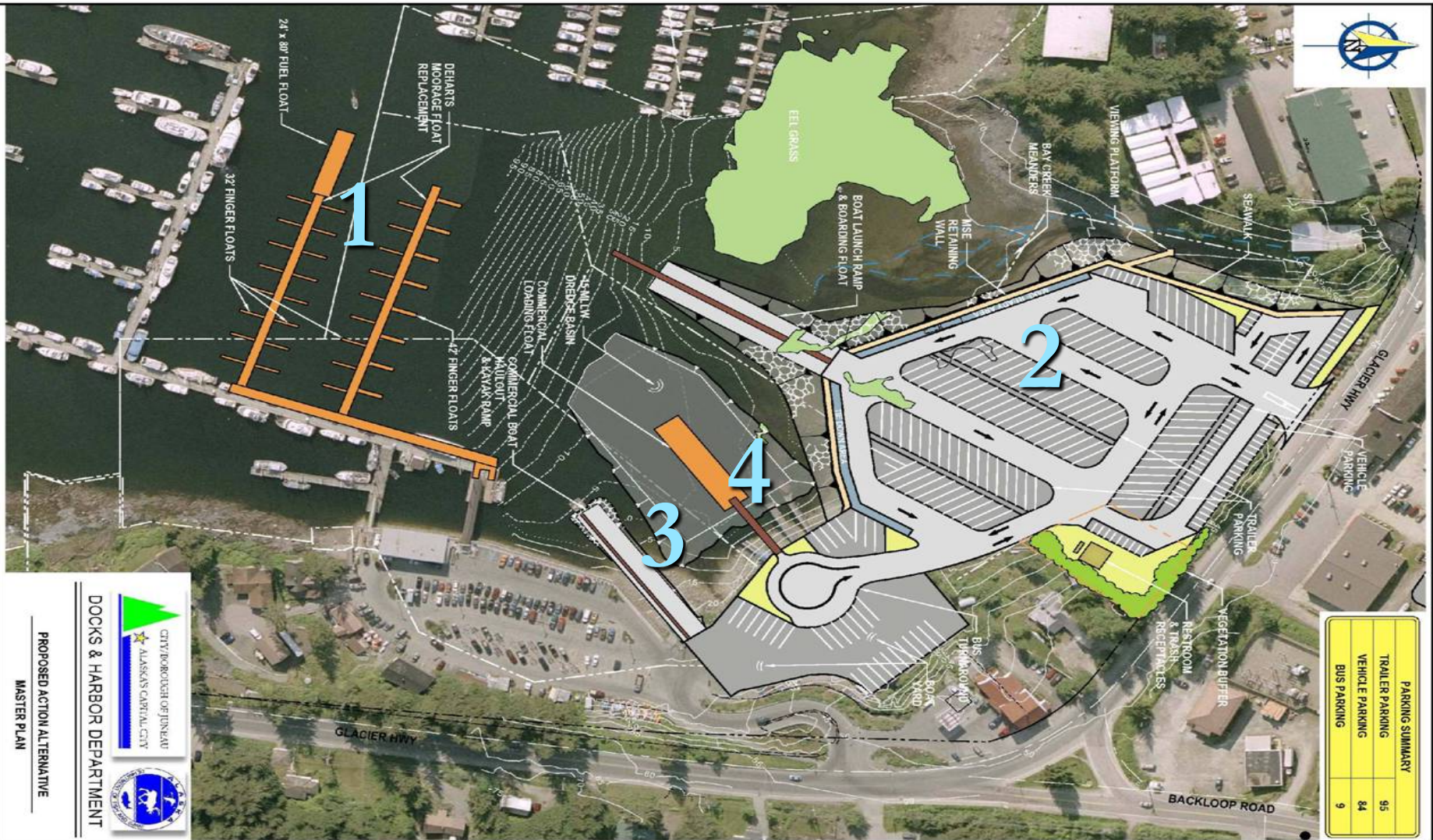
Statter Original Condition



Initial Plan



Statter Harbor Master Plan



PARKING SUMMARY	
TRAILER PARKING	95
VEHICLE PARKING	84
BUS PARKING	9

CITY & BOROUGH OF JUNEAU
ALASKA'S CAPITAL CITY

DOCKS & HARBOR DEPARTMENT

PROPOSED ACTION ALTERNATIVE
MASTER PLAN

ENGINEERS, INC.

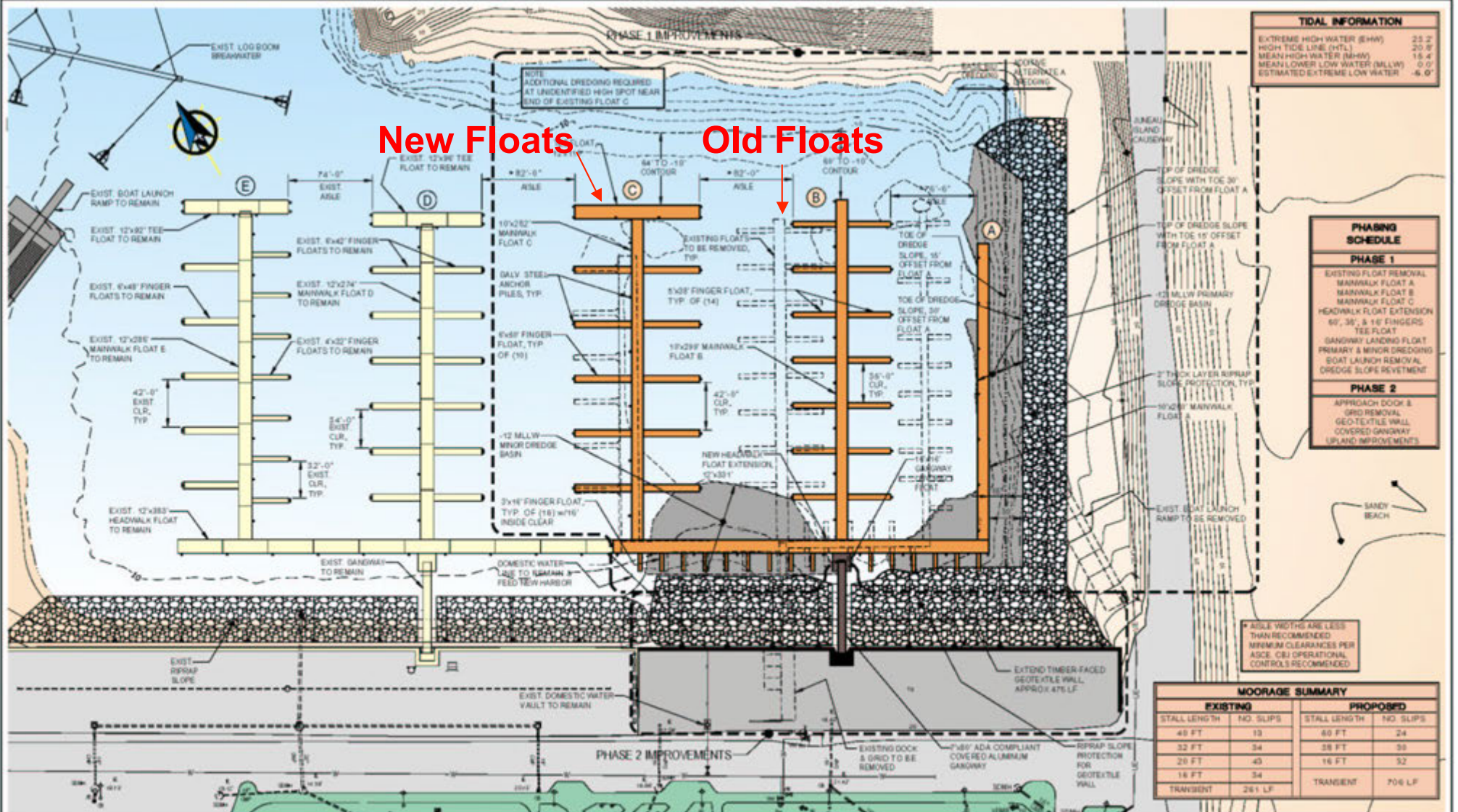
P N D

CDR. 81 CHUCK 306
DATE: FEB APPROVED: 2/26
SCALE: AS SHOWN
1" = 100' FT

USACE

PROJECT TITLE:
PROPOSED ACTION ALTERNATIVE
MASTER PLAN
3 OF 3

New Douglas Harbor Plan

[illegible]

P | N | D
ENGINEERS, INC.

Phone: 907-586-2091
Fax: 907-586-2099
www.pitd-arc.com

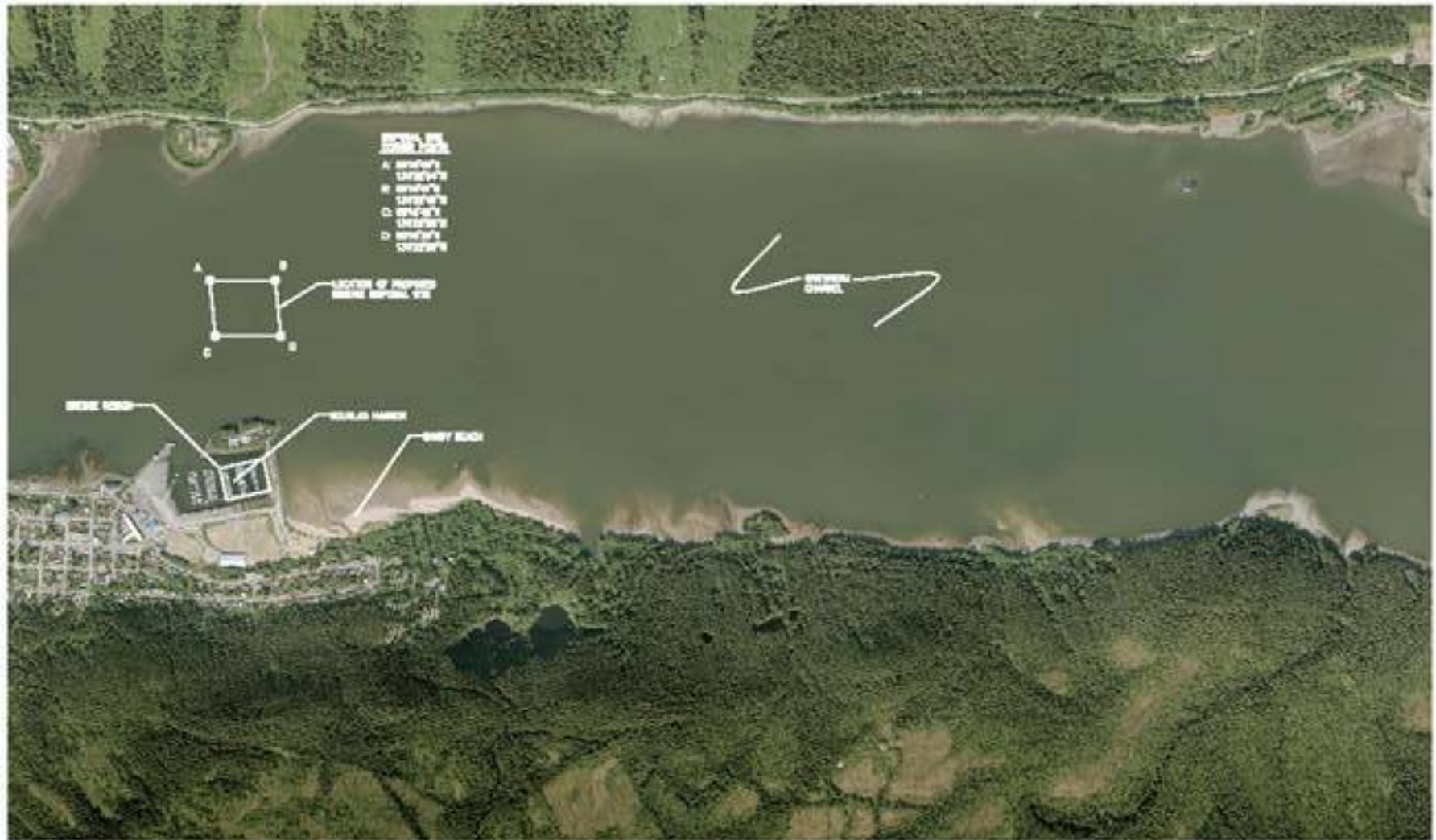


OLD DOUGLAS HARBOR
RENOVATION
CBJ PROJECT NO. DH 06-350

**SHEET TITLE: CONCEPT NO. 2
MASTER PLAN
PHASING SCHEDULE**

3
5 3

Disposal Dredge Site

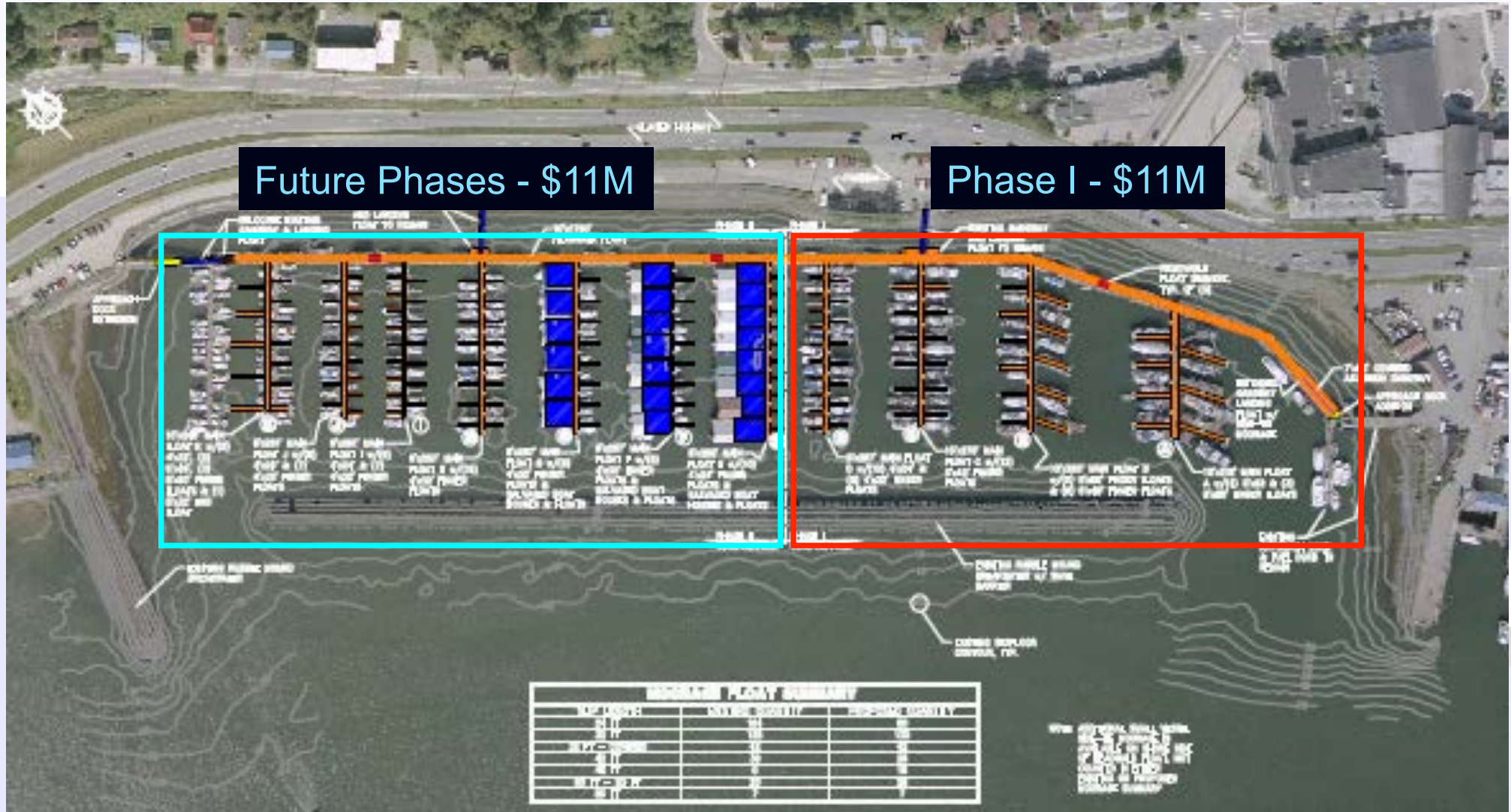


REVISIONS		DATE		BY		CHECKED	

Mike Pusich Douglas Harbor



Aurora Harbor Rebuild



Auke Bay Loading Facility



Self Propelled Boat Lift



Self Propelled Boat Lift



65' long

35 tons

'bridge park' Layout



Programming for a New Maritime Center



Online Launch Ramp Permits



2013

Juneau Harbor Launch Permits

www.JuneauHarbors.com

[Permits](#)

[Welcome!](#) | [My Account](#) | [My Cart](#) | [Checkout](#) | [Log In](#)

[Search](#)

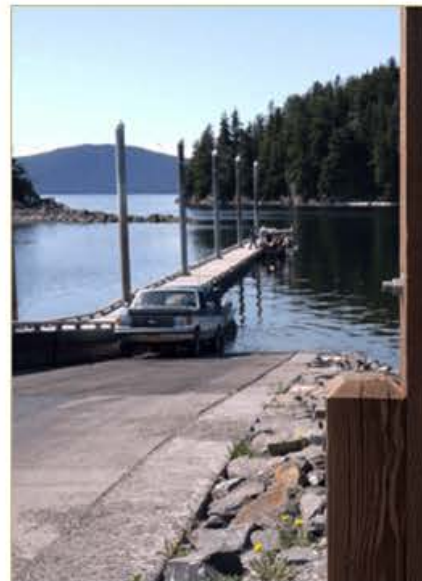


2013 Juneau Harbor Launch Permits **NOW AVAILABLE** for purchase. [PURCHASE NOW >>](#)



Day-use Permits

[>>](#)



Annual Permits

[>>](#)



Commercial Permits



[>>](#)



[Juneau Docks & Harbors](#) | [Site Map](#) | [Search Terms](#) | [Advanced Search](#) | [Contact Us](#)


Newsletter Sign-up:

[SUBMIT](#)


D&H on YouTube


 


 **JuneauHarbors**  1 subscribers 104 video views


[Browse videos](#) 


[Uploads](#) **Feed** [Comments](#) [View](#)

 JuneauHarbors uploaded a video 2 months ago

 **Statter Harbor Moorage Improvements - Part 1**
77 views
The Statter Harbor Moorage Improvements Project is an \$8.3 million project to replace the existing concrete headwalk, gangway and utility float and the wood floats formally known as DeHart's Marina. The new

 JuneauHarbors uploaded a video 2 months ago

 **Juneau Harbors Underwater Rover Footage**
28 views
Leaks in harbor water systems can be difficult and expensive to locate. Using a local dive business with an ROV instead of a diver has saved CBJ Docks and Harbors thousands of dollars this year alone. Ride

About JuneauHarbors
An enterprise fund within the City and Borough of Juneau government, Docks and Harbors operates and manages multiple waterfront facilities and properties throughout Juneau, Alaska.
Please visit our website below for more information.
These ind... [more](#)
 [Dock and Harbors Homepage](#)

by JuneauHarbors	
Date Joined	Nov 27, 2012
Country	United States

The Tide Line



Docks & Harbors The Tide Line July 2012



Port Director's Corner

On June 22nd, Sen Egan, Rep Cathy Munoz, Former Mayor Sally Smith, several current and former Assembly members, Docks and Harbors Board Personnel, and Lorene Palmer of JCVB participated in a ribbon cutting ceremony to commemorate the beneficial occupancy of the newly constructed downtown Visitor's Center.

The Visitor's Center was designed by Jensen, Yorba, Lett Architects of Juneau and constructed by North Pacific Erectors of Douglas. A new "Welcome to Juneau" sign has been installed since the ceremony and local artwork from Arnie Wiener and Lisa Rickey will close out this phase of the downtown waterfront.

In October, Trucano Construction will begin a \$2M project to "deck-over" the area known as the old Ferry transfer bridge. Once this work is complete, there will be pedestrian access along the waterfront contiguous from the Franklin Duck to Marine Park and is in keeping with the vision to create a "Seawalk" extending to the Bridge.



The next phase of downtown Construction will be to reconfigure the uplands parking lots. We had hoped to award a contract this year; unfortunately, we were unable to secure the final ADOT permit in time to combine with the "deck over" project. Our plan is to begin the Upland Parking areas in October 2013 which will segregate the various vehicular users (privately owned cars, busses/coaches, and "B" permit 15 passenger busses) from each other and improve the pedestrian flow. The vision is to create a more safe and efficient flow of "man and machine".

http://www.juneau.org/harbors/documents/PROPOSEDDEVELOPMENTPLAN_Rev12-15-11_000.pdf

Auke Bay Loading Facility - Net Float. After several months awaiting the necessary regulatory permits, we have moved the Net Float into its permanent location. This Net Float is envisioned to help commercial fisherman lay out and repair their nets. Storage of equipment is not allowed and, although there is not a fee, all users of the Net Float must contact the Auke Bay Office at 789-0819. Please keep the barge clean for the next patron to use.

Dellarts Patrons. The Docks and Harbors Board developed a plan to facilitate an orderly transition to the new facilities beginning in May 2013 at Don Statter Harbor. Dellarts Patrons who have had a slip since before 2005 should expect to receive a letter before the end of July regarding new slip assignments. Around September 1st, Dellarts patrons who have enjoyed a slip assignment since 2005 will receive a similar letter regarding slip assignments. All general inquiries should be made to Mr. Doug Unruh at 789-0819.

Little Help? The Harbor staff always appreciates additional eyes on our facilities. Unfortunately, we can not provide the oversight we desire at some of our more remote facilities (Taku Harbor, Echo Cove and even North Douglas Boat Ramp). Please let us know if there are items which require our attention, but especially at these remote locations. We continue to look at ideas to improve the Echo Cove Boat Ramp for all harbor patrons. Please note even the smallest leaks have a cost to Docks & Harbors -- please report leaks!

Water Costs Money-Repair Leaks Immediately

Small water Leaks can cost big money.
Water Wasted over 3 Months
at 60 psi Water Pressure

Diameter of Hole	Water Wasted over 3 Months at 60 psi Water Pressure
1/4"	1,181,500 Gallons
1/8"	296,000 Gallons
1/16"	74,000 Gallons
1/32"	18,500 Gallons



Docks and Harbors Meetings:

Operations Meeting
August 21st, 2012 at 5:00 pm
at the Aurora Harbor.

CIP Meeting
August 23rd, 2012 at 5:00 pm
at the Assembly Chambers

Finance Meeting
August 28th, 2012 at 5:00 pm
in CEJ Room 224.

Regular Board Meeting
August 30th, at 7:00 pm at
CEJ Assembly Chambers

Please call 586-0292 for call in options for the above meetings.

Docks & Harbors Board Members.

If the opportunity presents, please take time to thank Mr. Don Etheridge and Mr. Wayne Wilson for their service on the Docks & Harbors Board. These non-paying public service positions require a great deal of commitment and time and we are thankful for those who are willing to be called to civic duty. Similarly, please welcome Dr. Dave Logan and Mr. Scott Spickler to the Board. Dr. Logan is a lifelong Juneauite and a local dentist. Mr. Scott Spickler is an insurance agent with New York Life. Finally, congratulations to Mr. Tom Donek who was reappointed for a 3 year term.

Docks and Harbors Regulations

All of Docks and Harbors Regulations are posted at
<http://www.juneau.org/harbors/harboregs.php>

Aurora Harbor Update

At Docks and Harbors July 12th, Special meeting the Board recommended to the Assembly to approve an appropriation of \$1.5M from the Harbor fund to CIP for the Aurora Harbor Re-Build Project.

•Monthly Docks & Harbor newsletter.

•Contact Teena Scovill at 586-0292 or teena_scovill@ci.juneau.ak.us



CITY/BOROUGH OF JUNEAU
ALASKA'S CAPITAL CITY

Questions?

