



Oil Spills: Are you prepared to help?

LCDR Jason Hagen
ENS Dan Kenney

Coast Guard Sector Puget Sound Incident Management Division



The map displays the Pacific Northwest region, including parts of British Columbia, Canada, and Washington and Oregon, USA. Key features include:

- Major Cities:** Vancouver, Coquitlam, Burnaby, Richmond, Surrey, Abbotsford, Chilliwack, Bellingham, Anacortes, Burlington, Sedro-Woolley, Mt. Vernon, Oak Harbor, Marysville, Everett, Whidbey Island, Redmond, Seattle, Kent, Tacoma, Puyallup, Olympia, Shelton, Centralia, Chehalis, Raymond, Westport, Aberdeen, Ocean Shores, Ocean City, La Push, Forks, Ozette, Neah Bay, Port Angeles, Sequim, Port Renfrew, Sidney, Duncan, Ladysmith, Nanaimo, Parksville, Port Alberni, Ucluelet, Harrison Hot Springs, Sunshine Valley, and Yakima.
- National Parks and Forests:** Pacific Rim National Park Reserve, Olympic National Park, Olympic National Forest, Mt. Rainier National Park, Wenatchee National Forest, Mt. Baker-Snoqualmie National Forest, and Ross Lake National Recreation Area.
- Highways:** Various numbered routes are shown, including 4, 19, 18, 17, 14, 101, 12, 5, 7, 3, 2, 90, and 82.
- Study Area:** A red box highlights the Puget Sound region, including Seattle, Tacoma, and Olympia.

Common Sources

Sinking/Grounding

Mystery Sheens/Drums

Regulated Transfers

Unregulated Land Sources

(Trains, Planes, Autos, Containers, Outfalls)

Natural Occurrences

(Algae blooms, Creosote, Weather/Water Conditions)



Motivation...Why do you care?



Preventing Spills

1. Know your boats and operators.



2. Ask USCG.





After oil hits the water:

1. Secure the source!
2. Make the phone calls.
3. Boom it; add sorbents.
4. Get help.
5. Know your GRP



Federal: National Response Center:

1(800) 424-8802



State: WA ECY:

1(800) 258-5990



Local:

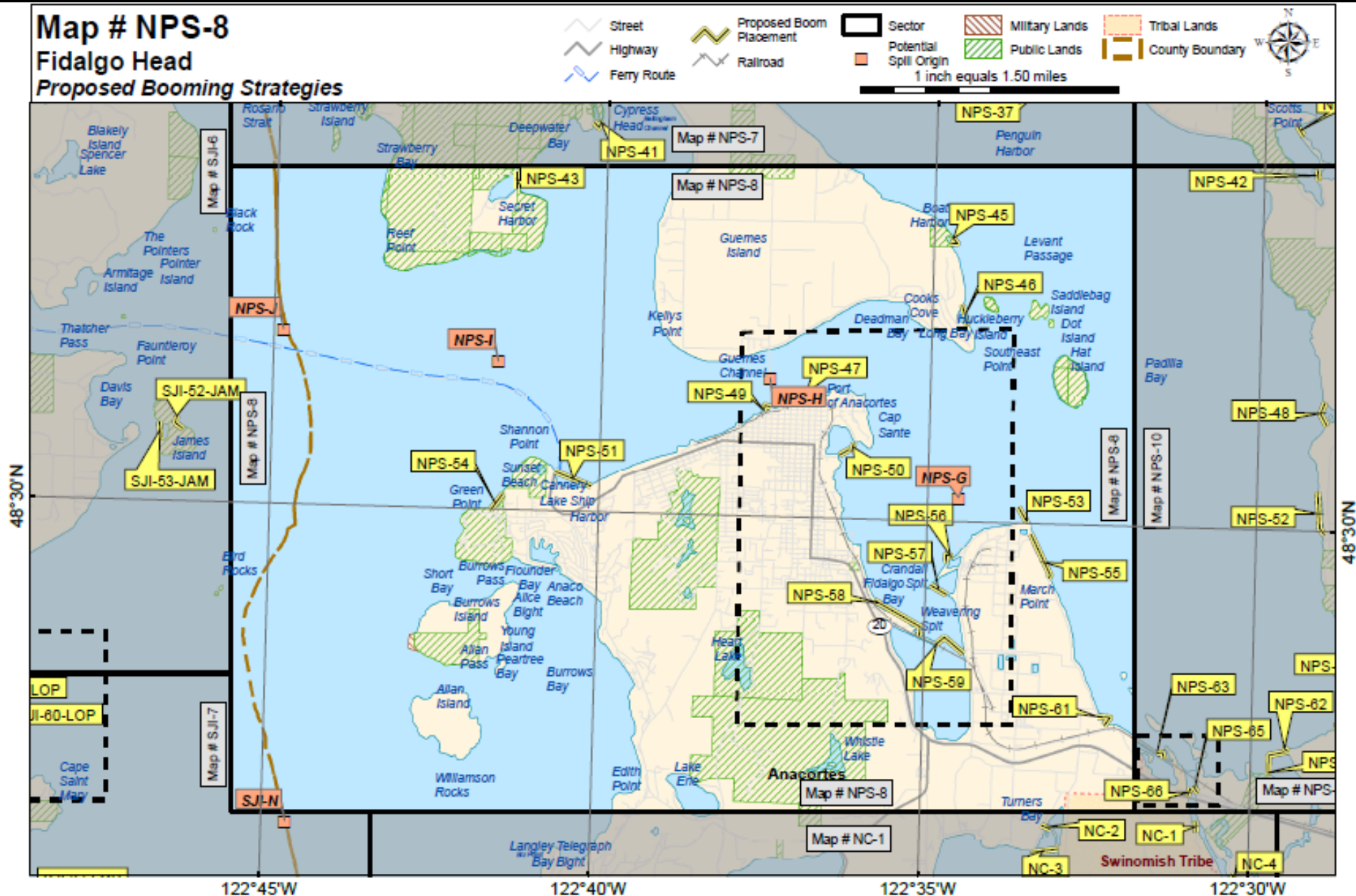
911 (Emergency)

“Must be made immediately” by Responsible Party

IAW 33 CFR 153(B) and 40 CFR 302

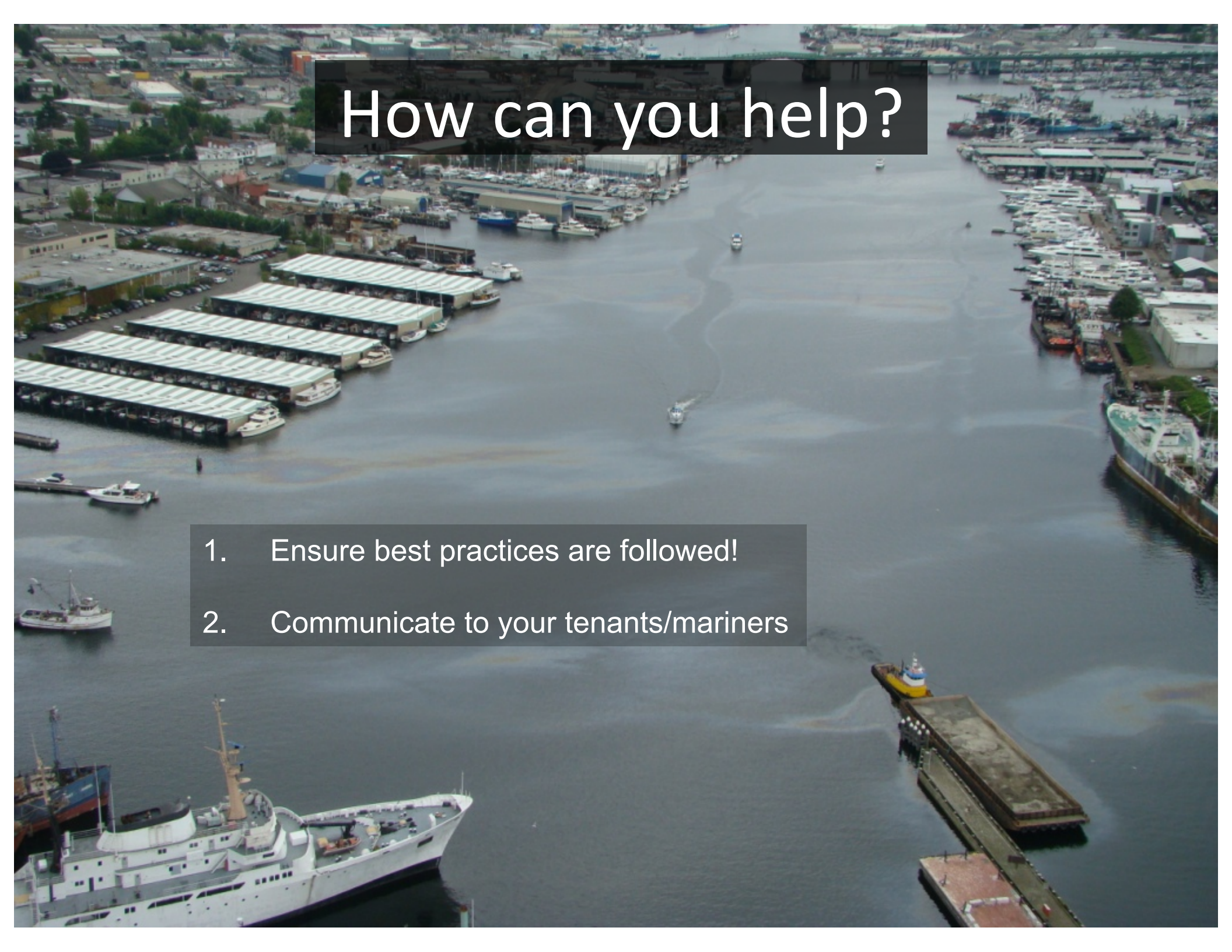
Fidalgo Head

A map of the study area in the northern part of Taiwan. It shows the coastline and major water bodies. A red box highlights the area of interest, which is further detailed in the inset map. The inset map shows the location of the study area within the context of the surrounding waters and islands.







An aerial photograph of a harbor area. In the center, a large, irregular, brownish-grey slick of oil spreads across the water. To the left, there are several long, parallel piers with white-roofed boat storage racks. Numerous small boats are moored along these racks. In the bottom left corner, a large white ship with a yellow mast is docked. To the right, a long, dark barge is being pushed or pulled by a tugboat. The background shows a dense urban area with various buildings and more boats in the distance.

How can you help?

1. Ensure best practices are followed!
2. Communicate to your tenants/mariners

Western Response Resource List



Participating Organizations

Equipment List

Equipment Item

Participating Organizations

Organization Contacts

Download Page

Kind-Type Reference

Click on an organization name to view list of equipment for that organization

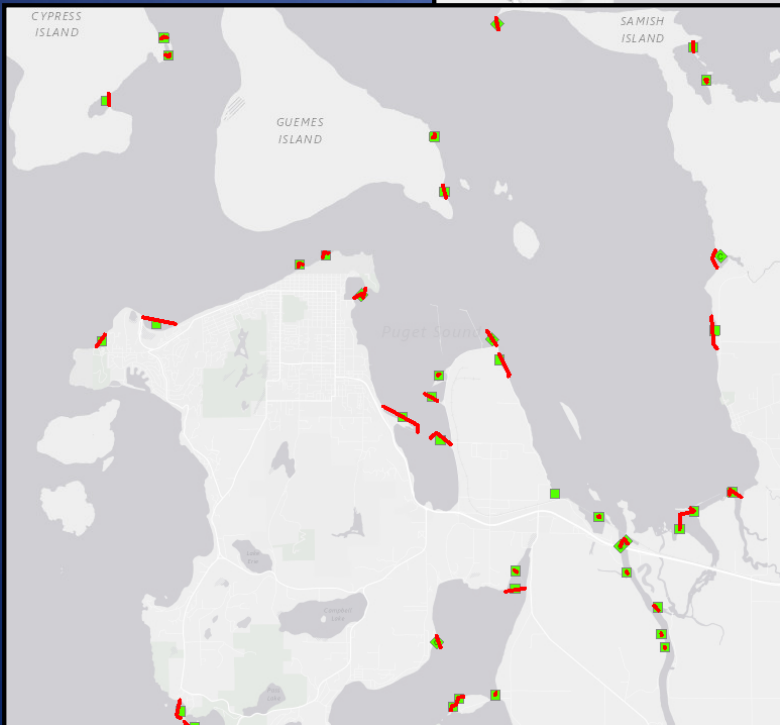
Click on the icon to view the web site for that organization

Able Cleanup Technologies		FRAMO AS		Shell Puget Sound Refinery	
Alon Asphalt Company		Global Diving & Salvage		Shell Seattle Terminal	
Ballard Marine Construction		Greensweep Asphalt Services		Tesoro (Anacortes Refinery)	
Big Sky Industrial		Guardian Industrial Services		Tidewater Barge Lines	
BP Cherry Point Refinery		Islands' Oil Spill Association		Tidewater Environmental Services	
BP West Coast Products		JTI Commercial Services		US Navy Region Northwest	
BP Pipelines North America NW		Kinder Morgan Harbor Island		US Navy SUPSALV	
Burlington Northern Santa Fe		Kinder Morgan Transmountain Pipeline		USCG District 11	
Ctr. for Toxicology & Env. Health, LLC		Lummi Nation		USCG District 13	
Clean Harbors Environmental Svcs.		Marine Spill Response Corp. HI		USCG Pacific Strike Team	
Clean Rivers Cooperative		Marine Spill Response Corp. NW		Vessels of Opportunity (VOO)	
Cook Inlet Spill Prev. & Resp. (CISPRI)		NRC Environmental Services		Washington Dept. of Ecology	
Cowlitz Clean Sweep		NWFF Environmental		Washington Dept. of Fish & Wildlife	
EPA Region 10		Oregon Dept. of Environmental Quality		Washington State Ferries	
ERM Alaska		Oregon State Fire Marshal		Western Canada Marine Response Corp.	
Focus Wildlife International		Phillips 66 Ferndale Refinery		Whitewater Rescue Institute	
Foss Maritime		Phillips 66 Pipeline Co.		WorldWind Helicopters	
Fototerra Aerial Survey LLC		SEAPRO			

Vessels Of Opportunity



Geographic Response Plan



Shoreline Cleanup Assessment Team





ICP/Rehab

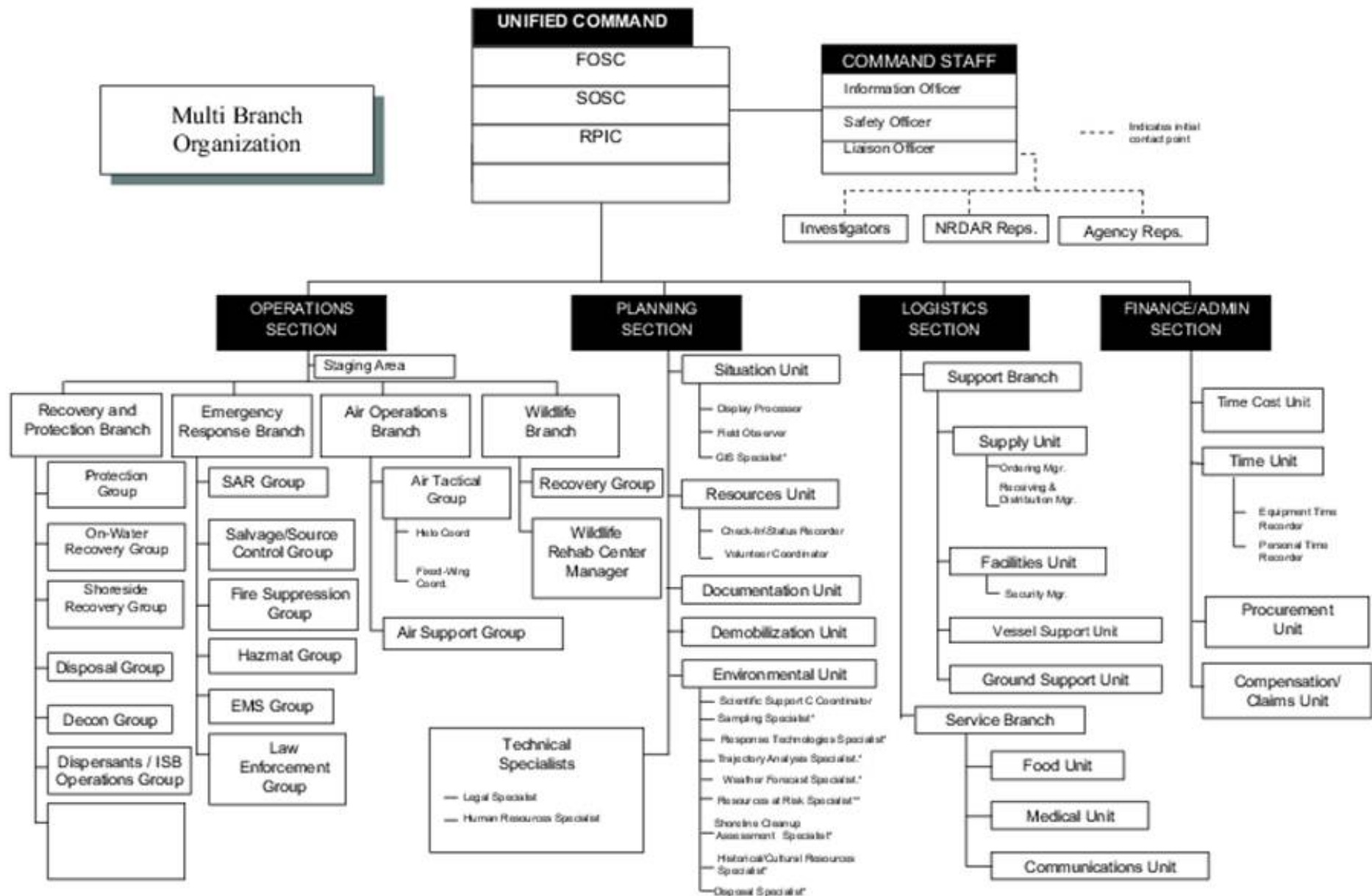
Parking Lot

Available Slips

Fueling

Boat Ramp

Incident Command System





Potential marina roles in ICS:

- Responsible Party Incident Commander (Unified Command) (if you own it!)
- Joint Information Center participant
- Single resource: single team or asset/crew
- Situation Unit: gather and analyze data
- Facilities Unit: set up/maintain/demob facilities (ICP, Staging Area, etc)
- Security: of your facility
- Ground Support: fueling of vessels/vehicles

Federal: National Response Center:

1(800) 424-8802



State: WA ECY:

1(800) 258-5990



Local:

911 (Emergency)

“Must be made immediately” by Responsible Party

IAW 33 CFR 153(B) and 40 CFR 302



ENS Dan Kenney
(206) 217-6902
daniel.a.kenney@uscg.mil

United States Coast Guard
Sector Puget Sound
Incident Management Division