



# Alaska Maritime

## National Wildlife Refuge

 Land within the Refuge Boundary (includes some private land)

 Refuge Headquarters and Visitor Center

### Visiting the Refuge

Ferries, tour boats, planes, and cruise ships can transport you to parts of the Refuge. Only Homer and Seward are accessible by road, but all communities in and near the Refuge have scheduled air service.

The best time to visit is from June through August when marine birds and mammals come ashore to breed and raise young. Expect cold, wet, windy weather and bring rain gear and layers of warm clothing. There are no campgrounds on the Refuge. Nearby towns have lodging.

### Visitor Center

Come explore the adventure and wildlife of this remote Refuge through exhibits, films, and guided walks and talks at our Refuge visitor center (known locally as **Islands & Ocean**). Special experiences can be arranged for schools and other organized groups. Admission is free of charge.

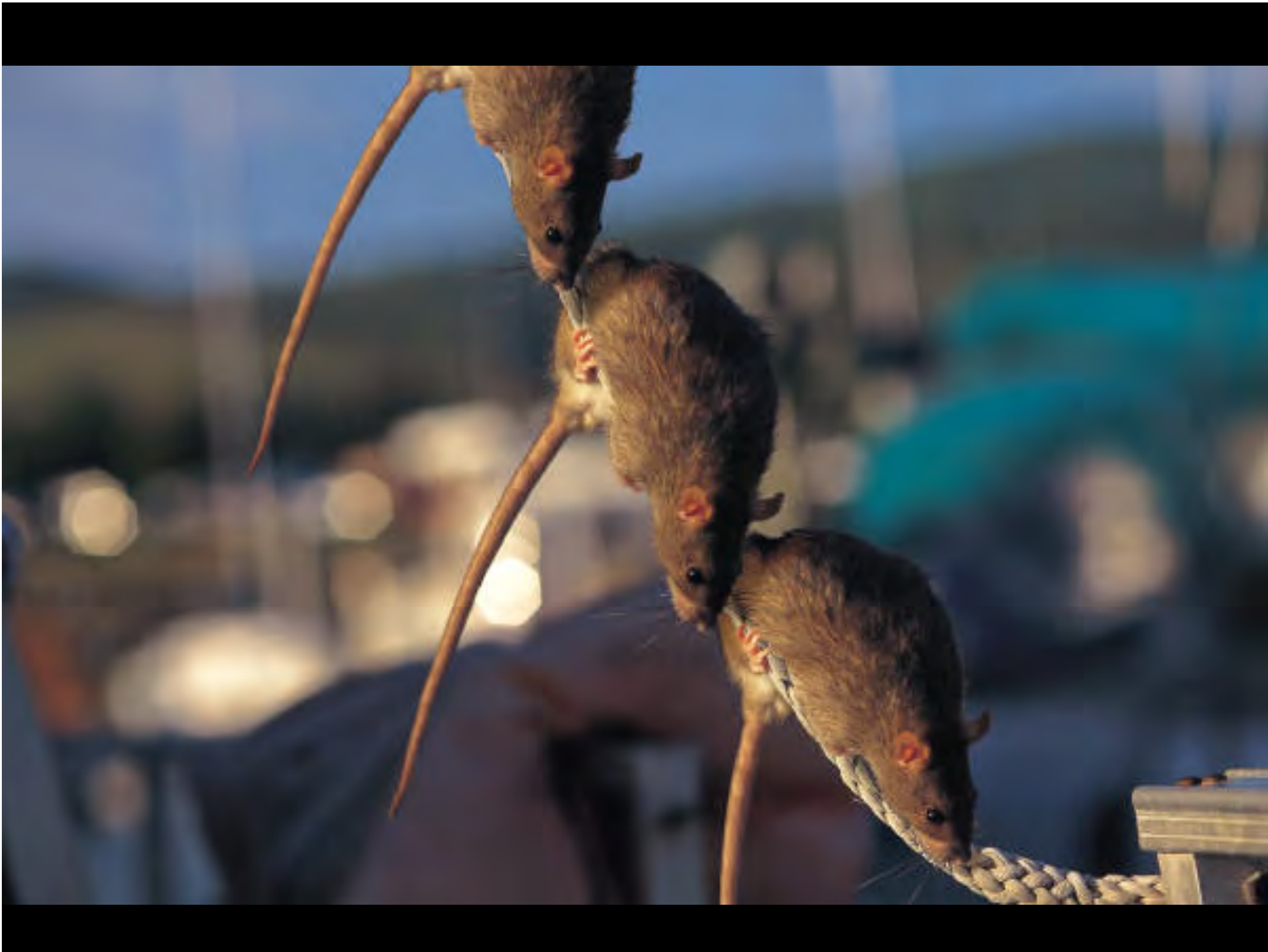
Base map credits: Esri, DeLorme, GeoEye, Earthstar Geographics, CNES/Airbus DS, USDA, USGS, AeroGRID, IGN, and the GIS User Community



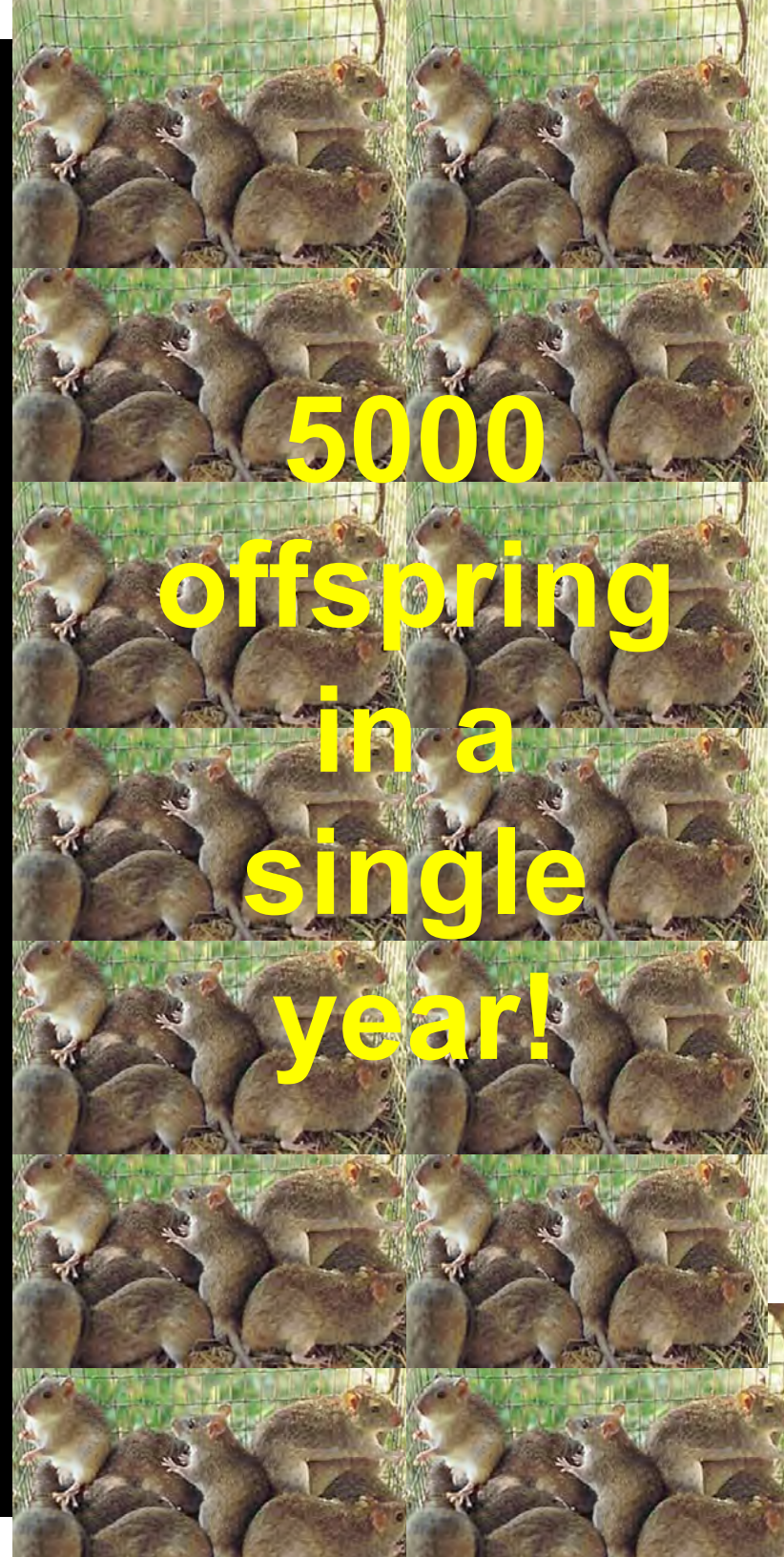














Rats take:  
eggs  
chicks  
adults



# Invasive Rodents

- Destroy Native Wildlife
- Cause Health Issues
- Damage Property























# An Ounce of Prevention is Worth a Ton of Cure





